



MAYFLOWER NEWSLETTER

January 2013

MAYFLOWER CHAPTER BOARD MEMBERS

Co-Presidents

Donna Allen - (978) 252-5321
Marcia Kent - (978) 658-7014

Vice President

Jenna Sleeper - (978) 373-3039

Secretary

Heidi Lee - (978) 887-7348

Treasurer

Caren Cowie (781) 944-7630

Membership

Robyn Hodges - (978) 887-3650

Programs

Sandra Porter - (978) 250-8910

Webmaster

Susan Russo - (781) 944-8437

Hospitality

Dot Woodle - (978) 448-2012

Librarian

Edythe Salzman - (978) 448-5108

Newsletter/Publicity

Open

Happy New Year Mayflower Members!

Our 2012/2013 program year is in full swing with much to look forward to through June. Fall program highlights included the Wenham Museum Hook-in and exhibit of our Massachusetts mats, Gail Majauckus' Santa (and friends) door decorations program, and the Woolly Mason Jar dye program with Lucy Richard and Barb LeDuc. What fun, inspiration and learning!

Please note that the August 2012 newsletter transposed the programs scheduled for April and May. They are corrected here. Also, the **Hooking Bee scheduled for January 19th will be held at the church in the room downstairs.** The upstairs room is not available. Dot Woodle has graciously offered to host the Strawberry Festival in June at her wonderful lakeside home in Groton, and this is also reflected.

Thanks to everyone for the contributions that make the Mayflower Chapter such an exciting and inviting organization. We are indeed blessed!

Donna Allen & Marcia Kent
Co-Presidents

WELCOME NEW MEMBERS!

Jess Wrobel, Ginny Shannon, Hannah Gregoria, Nancy Sankus, and Lynne Cassinari have joined our ranks. Please make their acquaintance and extend them a warm welcome!

BUSINESS AS USUAL

All meetings will continue to be held at the Unitarian Universalist Church from 10:00 - 2:00. The Treasure Table will continue to provide an opportunity for members to sell or donate items. Please indicate the price (if any) and your name if you would like to be paid for the item. If you are compensated for an item, it is expected that you will donate 10% of the proceeds to the Mayflower Chapter. New name tags were distributed to members at the meeting in September. Please remember to wear them!

DIRECTIONS FROM I93: Take Exit 37A onto Route 95/128N to Exit 38B/Route 28N. At the second set of lights (gas station on left), turn left onto Summer Avenue. Follow Summer Avenue through one set of lights. At the second set of lights, you will see the church on the corner of Summer Avenue and Woburn Street. Park in the church lot or on Summer Ave. **DIRECTIONS FROM I95/ROUTE 128:** Take Exit 38B/Route 28N and follow above directions.

2013 PROGRAMS

January 19, 2013



Downstairs at the UU Church, 239 Woburn St., Reading, MA

This program is devoted solely to the joy of hooking. Mayflower Board members will provide the hospitality. You provide the camaraderie! Bring your lunch and whatever you'd like to work on.

February 16, 2013



Big Bee

It's Big. It's Fat. It's the annual Big Bee! Join us in extending a warm welcome to visitors from other Region 1 Chapters at this annual event. Mayflower suppliers will display items for sale and we'll have the ever-popular door prizes! Please notify Donna Allen if you'd like to vend at this meeting and indicate how much table space you'll need. 10% of proceeds will go to benefit the chapter. We'll have vendors with lots of great wool, so come with your projects for color planning purposes, bring your completed pieces for display in the rug show, your works in progress, a sandwich, and a guest if you wish. Cookies and beverages will be provided.

March 16, 2013



Coordinating Colors in Your Rugs

Angela Foote

If you've ever attended the annual Region I Hook-in in Westford, MA, you'll recognize Angela's fabulous hand-dyed wool and vibrant color sense! Angela is a McGown-certified teacher offering classes in color theory, dyeing, and shading techniques at her home and in private workshops around New England. At this program, she'll help to demystify the process for color planning a rug that really works and will offer a selection of her beautiful wool for sale.

March 23, 2013



Region I Hook-in

First Parish Unitarian Universalist Church, Westford, MA

Join hooking artists from all over New England for a fun day of hooking, an opportunity to purchase wool and supplies from some great vendors, and a delicious lunch. The cost to attend is \$25.00, which includes lunch. Details and a registration form for this event will be provided in the ATHA Region 1 newsletter arriving by email in January and will also be available at the February meeting.

April 20, 2013



Hooking Journeys

Mayflower Members

Show and tell with depth. We'll celebrate the accomplishments and gain insight into the work of two Mayflower members as they share their stories and rugs with us. This format has been very much enjoyed in the past and we will continue to offer it on an annual basis to provide an opportunity to know and appreciate each other more fully.

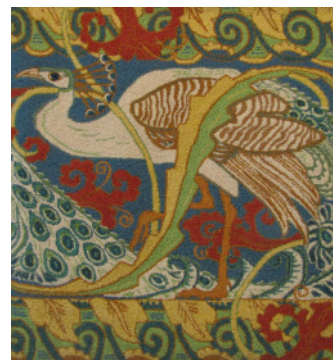


May 18, 2013

Traditional Rug Hooking with Wool Yarns

Margaret Arraj, Mill River Rugs

Margaret is celebrated for her beautiful work with wool yarn in the adaptation of classic designs which she will be sharing with us. Her work has been featured in Rug Hooking Magazine and she has presented to many different rug hooking groups. Don't miss this opportunity to see Margaret's work up close and Personal. **Don't forget to bring your completed Shape Challenge projects for display!**



June 15, 2013

Strawberry Festival

Hosted by Dot Woodle, 74 Weymissset Road, Groton, MA

Come bid farewell to your friends for the summer, enjoy some strawberry shortcake, and of course, hook! Bring your lunch and, if you wish, a munchie to share.

WHAT COLOR ARE YOU?

Our monthly meeting logistics are accomplished with the generous help of our Color Teams, each of which is responsible for two meetings in any given program year. We rely on each Mayflower member to sign up for one of these teams. Please contact Dot Woodle with questions or to sign up for a team. The 2012/2013 roster is as follows:

Blue -- September/March
Green -- November/April

Yellow -- October/February
Red -- December/May

MAYFLOWER SHAPE CHALLENGE

The Shape challenge -- any shape, any size, any way you choose to do it -- was announced at the start of this program year and we hope you're preparing to share your completed projects with us at the May meeting! Contact Donna Allen or Marcia Kent with questions.

HAPPENINGS

ATHA Quiet Corner Chapter Rug Show, June 22, 2013, 9:00 am - 3:00 pm
Woodstock Fairgrounds, Rte. 169, South Woodstock, CT. Over 150 rugs on display, vendors, demonstrations, door prizes, portion of proceeds to benefit Chapter's Scholarship Fund and the Hooked Rug Museum of North America. Guest Speaker: Kathleen Herbert. Admission: \$5. Contact: (860) 928-0162, or whisperhill@earthlink.net.

Farm to Fiber (Formally Fiber Twist), Saturday, April 20, 2013, 10:00am - 05:00pm
Roundhouse at Franklin County Fairgrounds, 89 Wisdom Way, Greenfield, MA. (413) 773-5463
Featuring a fiber marketplace, demonstrations and workshops.

32nd Annual Green Mountain Rug School, June 5 - 14, 2013
VT Technical College Campus, Randolph Center, VT
One three-day and one five-day session, plus R&R: Rest and Rug Hooking Retreat.
Greenmountainhookedrugs.com/school.